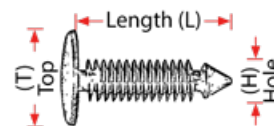


All clips are in **Packets of 25** unless stated otherwise.



If the clip you are after is not listed please let us know and we can try to source it for you.



BS1802KV2 Body Shop Clip / Fastener Kit - 180 Pc



✳ Comes with a selection of our most popular Body Shop fasteners ✳ Includes storage box with 18 removable compartments with wall mounting holes and can be separated at hinge into two sections ✳ All Fasteners are of Trade Quality ✳ Refills are available for all clips & screws ✳ Most clips are OEM equivalent.

180 Pc

Multi Purpose Clips

CBP002 Small Push Pin Plastic Rivet Clip



SUITS: Datsun/ Bluebird cowl panel

T: 11 H: 5 L: 7

CBP010 Small Uni Push-In Clip



SUITS: Nissan

T: 11 H: 5 L: 13

CBP015 Small Uni Push-In Clip



SUITS: Mazda » Nissan

T: 11 H: 6 L: 15

CBP016 Small Uni Push-In Clip



Suits: Cowl & Vent Panels and many other applications

T: 12 H: 6 L: 16

CBP046 Toyota Bumper Bar & Fog Lamp Clip



SUITS: 2010 on.
Also Lexus

OEM: 0467-05170
(Toyota)

T: 10 H: 5 L: 10

CBP049 Mazda Front B/Bar & Radiator Grille Panel Clip

SUITS: 2006 on.
OEM: S51S-51-833



T: 11 H: 7 L: 15

CBP050 Push Button Clip



SUITS:
» Toyota
» Mitsubishi
» Suzuki
» Hyundai

T: 15 H: 6.3 L: 13

CBP055 Push Button Clip



SUITS: Toyota » Nissan

T: 18 H: 7 L: 17

CBP060 Push Button Clip



SUITS: Kluger, Honda CR-V

T: 17 H: 8 L: 16

CBP072 Subaru 2011-17 Splash Tray & Guard Clip

Engine underbody
Covers & Front
Fender
OEM: 909140068
(Subaru)



T: 20 H: 8 L: 11

CBP075 Toyota Camry, Kluger, LandCruiser, Lexus Clip

OEM: 90467-07211 (Kluger, Camry & Lexus), 90467-07217 (LandCruiser)



T: 18 H: 7 L: 10

CBP077 Toyota Kluger, Camry, RAV4 Push-In Clip

SUITS: Also C-HR & Lexus (2006 On)
OEM: 90467-07215 (Toyota)



T: 20 H: 7 L: 10.5

CBP078 Toyota Kluger, Camry, RAV4 Push-In Clip

SUITS: 2012-2020
OEM: 75867-06030, 75867-33050 (Toyota)



T: 20 H: 8 L: 16

CBP081 Mazda All Models / Subaru / Nissan Clip

SUITS: Mazda 2, 3, 6, CX3, CX5, CX7 CX9, MX5 & RX7 (2005-15)
OEM: L33X-13-209 (Mazda)



T: 20 H: 8 L: 13

CBP083 Mazda CX3/CX5 Push In Guard Liner Clip

SUITS: Mazda CX-3, CX-5 2016 On, and others.
OEM: B45A-56-146A



T: 20 H: 8 L: 13

CBP084 Mazda Guard Liner Clip

SUITS: Mazda 2, 3, 6, CX9, MX5 2009-2017
OEM: BGV4-56-145



T: 20 H: 7.7 L: 14

CBP087 Kia / Hyundai Push In Clip

SUITS: KIA Rio, Optima, Sportage, Carnival, HYUNDAI Accent, Elantra, Santa Fe & Tucson
OEM: 86595-2T500 (Kia)



T: 18 H: 8 L: 14

CBP090 Toyota Camry, Corolla, Hilux Push-In Clip

SUITS: Also Lexus & others (2002 On)
OEM: 9046-07201 (Toyota)



T: 20 H: 7 L: 10

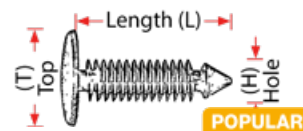
CBP092 Toyota and Mazda Push-In Guard Liner Clip

ALSO SUITS: Suzuki & Others (1984 On)
OEM: 09409-07332 (Mazda), 90467-07164 (Toyota)



T: 20 H: 7 L: 10

All clips are in **Packets of 25**
unless stated otherwise.



CBP094 Toyota Corolla, Celica Guard Liner Push-In Clip

ALSO SUITS: Lexus (2002 On)

OEM:
90467-10183 (Toyota)



T: 18 H: 7 L: 7.5

POPULAR

CBT027 Universal Small Screw Clip

SUITS:
Commodore interior trims » Ford mud flaps & guard liners universal applications



T: 15 H: 6 L: 16

CBT028 Universal Screw Type Clip

SUITS: » Nissan » Mitsubishi » universal applications



T: 20 H: 8 L: 20

CBT029 Ford Ranger / Mazda BT50 Guard Liner Clip

SUITS: Also GM
OEM:
9XG15-694X0 (Mazda), N804570S (Ford)



T: 17.5 H: 6.5 L: 22

CBT047 Ford Territory Guard Liner Clip

OEM:
W705436-S300 (Ford)



T: 15 H: 6 L: 19

CBT058 Honda/Captiva/BMW/Mini Cooper Panel Clip

SUITS: Captiva/Honda. Also BMW.



T: 20 H: 10 L: 15

CBT065 Mercedes Push-In Clip

OEM: 124 990 04 92



T: 16 H: 7 L: 18

CBX010 Universal Mini Christmas Tree Clip

SUITS: Cowl panels and weather strip seals



T: 11 H: 5.5 L: 13

CBX017 Black Universal Medium Xmas Tree Clip

SUITS: Universal Applications



T: 17.5 H: 6.5 L: 20

CBX017G Grey Universal Medium Xmas Tree Clip

Grey version of CBX017



T: 17.5 H: 6.5 L: 20

CBX020 Universal Medium Xmas Tree Clip

SUITS: VX to VZ Commodore interior trim and door panels



T: 16 H: 6.8 L: 27

CBX025 Universal Large Xmas Tree Clip

SUITS: Falcon mud flaps, splash trays and interior trim panels



T: 18 H: 6.5 L: 27

POPULAR

Cowl / Scuttle Clips

6102006 Captiva Cowl & Radiator Support Clip

SUITS:
Honda

OEM: GM 94530397



T: 18 H: 6 L: 13

CBP068 Subaru Cowl Panel Push-In Clip

SUITS: Forester, Outback, Impreza, Legacy, WRX & XV Crosstrek
OEM:
91486-KJ010



T: 18 x 16 L: 13

CBP069K10 Subaru Cowl Grommet Clip - Pkt 10

Use with CBP068 Cowl Panel Clip

OEM:
91486-KJ000 (Subaru)



T: 14 H: 7 L: 7

POPULAR

CBT005 Mazda Cowl Panel Screw Clip

SUITS: Mazda 2, 3, 6, CX7 & CX9

OEM: GJ6E-50-715A



T: 12 x 8.5 H: 5 L: 9

POPULAR

CBT020 Mitsubishi Cowl Panel Screw Clip

SUITS: Hyundai » Magna TM -TF



T: 10 H: 5 L: 13

POPULAR

CBT031 VE Commodore Upper Cowl Panel Push-In Clip

OEM:
92138627, 21030249



T: 20 H: 10 L: 22

POPULAR

CBT040 Commodore Cowl & Guard Liner Push-In Clip

OEM:
92138636



T: 18 H: 9 L: 22

CBT035 Commodore Cowl Panel Screw Clip VT-VZ



T: 14 H: 7 L: 11

POPULAR

CBT037 Commodore Cowl Panel Screw Clip VT-VZ

SUITS: Also guard liner, radiator panel » Mazda » Ford



T: 18 H: 8 L: 12

CBT039 Commodore Screw Clip

SUITS: Commodore sill panel rubber seal » VT-VZ bumper cover



T: 15 H: 8 L: 15

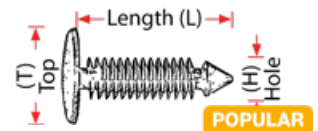
CBT045 Ford Cowl Panel Clip

SUITS: Ford BA On cowl panel & radiator shroud



T: 18 H: 8 L: 13

All clips are in **Packets of 25** unless stated otherwise.



CBT032K10 VE Commodore Lower Cowl Panel Clip - **Pkt 10**

OEM: 92138946



T: 15 H: 9.5 L: 14

CBT033K10 VE Commodore Lower Cowl Panel Clip - **Pkt 10**

OEM: 92138942



T: 15 H: 9.5 L: 14

CBT034K10 VE Commodore Lower Cowl Panel Clip - **Pkt 10**



T: 15 H: 9.5 L: 17

CBT1218 Nissan Patrol Cowl Panel Screw Clip

OEM: 66824-W1000



T: 12 x 18 H: 6 L: 10

CC2 Honda Accord Cowl Panel Clip

SUITS: Honda Accord & CR-V



T: 17 H: 8 L: 14 mm

CC8 Honda Civic / CR-V Cowl Panel Clip

SUITS: Honda Civic, CR-V & Integra



T: 17.5 H: 8 L: 12

CW265K8 Toyota FJ Cruiser Windscreen Cowl Clip Kit - Mixed **Pkt 8**

OEM: 61992-35010(x2) / 61118-35010(x4) / 61991-35010(x2)



POPULAR

T-Clip / Weather Strip Clips

CBA044W Toyota Weather Strip Seal Stubby T-Clip

SUITS: Large range of Toyotas
OEM: 90467-04034 (Toyota)



T: 15 x 5 H: 5 L: 9

CBA048W Toyota Weather Strip Seal T-Clip

SUITS: Camry, Corolla, RAV4, Celica, Kluger 95-2012



T: 13 x 7 H: 7 L: 13

POPULAR

CBA053 Toyota Cowl Panel Weather Strip Seal T-Clip

SUITS: LandCruiser 100 series » Camry, Aurion » universal



T: 13 x 7 H: 7 L: 13

POPULAR

CBA057 Toyota, Isuzu D-Max, Mitz Cowl Panel Clip

OEM: 90467-10146 (Toyota)



T: 17 x 8 H: 7 L: 14

CBA060W Nissan Weather Strip Seal Clip

SUITS: 2000 - 2008
OEM: 01553-08951, 65810-K2009



T: 6.5 x 16 H: 5 L: 15

CBA065 Universal Weather Strip Seal T-Clip

SUITS: Under bonnet & door rubber seals



T: 13 x 5 H: 5 L: 11

POPULAR

CBA076 Toyota Cowl Panel Weather Strip Seal T-Clip

SUITS: Corolla 93 On » Camry, Starlet, Celica



T: 13 x 9 H: 7 L: 11

CBA1260 Toyota Bonnet Weather Strip & Cowl Panel Clip

SUITS: Toyota & Lexus 1992 On
OEM: 90467-08011 (Toyota)



T: 13 H: 5 L: 11

CBA1268 Mazda Bonnet Weather Strip Clip

SUITS: Mazda CX3-CX9, 3, 5, 6, 626, 929, MX6.
OEM: J001-56-741



T: 14 H: 6.5 L: 10

CBA1275 Mazda Door Weather Strip Clip

SUITS: Mazda 2,3,6 & CX9 » Subaru, Nissan.
OEM: BP4K-58-762 (Mazda)



T: 9 H: 4 L: 7

Bumper / Guard / Grille / Bonnet Pad Retainers

CBF2114K10 VY - VF GM Rear Bumper Bar Facia Clip - **Pkt 10**



T: 21 H: 14 L: 17

CBP105 Toyota & Lexus Bumper Clip

OEM: 52161-16010, 52161-02020, 52161-44010-B0



T: 18 H: 9 L: 28

POPULAR

CBP108 Nissan Cowl/Bumper/Guard/Grille Clip

SUITS: Pulsar » Pathfinder » Maxima » 1993 On

OEM: 01553-09241



T: 18 H: 10 L: 15

CBP109 Nissan Cowl/Bumper/Guard/Grille Clip

SUITS: Maxima » Pathfinder » Navara » X-Trail » 1994 On

OEM: 01553-09321



T: 20 H: 8 L: 14

POPULAR

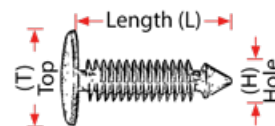
CBP110 Nissan X-Trail Grille/Radiator/Bumper Clip

2008 On
ALSO SUITS: Other Nissan models & Subaru
OEM: 01553-09611 (Nissan)



T: 18 H: 8 L: 12

All clips are in **Packets of 25** unless stated otherwise.



CBP114 Honda CR-V & Accord Bumper/Guard/Grille Clip

SUITS: Honda CR-V 91 On

OEM: 91503-525-003

T: 20 H: 10 L: 18



NEW

CBP116 Subaru Bumper/Grille/Guard Liner/ Under Cover Retainer

SUITS: Subaru 2000-2014 (Forester, Outback, Impreza, Crosstrek, Tribeca, BRZ)

OEM: 90914-0007

T: 21 H: 10 L: 20



CBA314 Toyota Bumper Bar Strip Clip

ALSO SUITS: Mitsubishi

OEM: 90468-04030 (Toyota)

O: 27 x 16 I: 20 x 5



CBA326SS Honda Bumper Bar & Grille Clip

SUITS: Also suits Hyundai Santa Fe & Sonata

OEM: 86593-24000 (Honda Accent)

O: 29.5 x 13.5 I: 22 x 4



NEW

CBH629F Ford Bonnet Insulation Clip



T: 29 H: 6.3

CBH935H Holden VR-VE Bonnet Insulation Clip



T: 35 H: 9

CBH1025 Toyota Bonnet Insulation Clip



SUITS: Camry, Corolla, Rav4 & others

OEM: 90467-09050 (Toyota)

T: 25 H: 8.5 L: 12

CBH1126 Kia & Hyundai Bonnet Insulation Clip



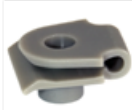
SUITS: Many Hyundai and Kia models

OEM: 81126-37010 (HYUNDAI)

T: 26 H: 10 L: 14

CSM2022G Mazda Nylon Bumper & Guard Liner U-Nut

OEM: C274-50-133 (Mazda)



T: 20 x 22 H: 4.8 (#10)

CBT003 Mazda Radiator Grille & Front Bumper Clip

SUITS: Mazda 2004 - 2017

OEM: EA01-50-037 (Mazda)

T: 10 H: 5 L: 9



Sill / Drip Mould / Body Clips

CBS145R Ford Sill Panel Retaining Clip Red

SUITS: Ford Falcon

OEM: BG-1460899-A (Ford)

T: 17.5 H: 13.6 x 9



CBS255 Mazda Sill Panel Clip



OEM: BP4L-51-SJ3 (Mazda)

T: 20 x 13

CBS250W Mazda Sill Panel Clip White



OEM: G18K-51-SJ3 (Mazda)

T: 18.5 H: 9 L: 19

CBS305W Holden VT-VE Sill Panel Clip



OEM: 92138807 (GM)

CBS310 Holden VT-VE Sill Panel Clip



OEM: 92138808 (GM)

T: 21 x 15 L: 14

CBS350W Holden VT-VE Drip Rail Moulding Clip



OEM: 92207444 (GM)

T: 31 x 12 H: 6 x 7

POPULAR

CBT071 Mitsubishi Triton Top Drip Rail Moulding Clip



SUITS: Triton ML/MN 2006-2015

Trim Panel / Flare Clips

CBM700W Kia / Hyundai Trim Panel Clip

OEM: 82315-36000 (Hyundai), 92552 36000 (Kia)

T: 19 H: 9 L: 15



CBM750 ISUZU D-Max / Colorado & Rodeo Mould Flare Clip

OEM: 8973599420 (ISUZU)



T: 17 H: 8 L: 17

CBM800B Toyota Kluger, Hilux, L-Cruiser Flare-Mould Clip

SUITS: 2001-On

OEM: 90904-67036 (Toyota)

T: 17 H: 8 x 8 L: 18



CBM810R Toyota Kluger, Hilux, L-Cruiser Guard-Mould Clip

SUITS: 2001-On

OEM: 90904-67037

T: 17 H: 8 x 8 L: 13



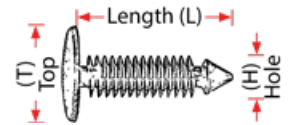
CBM815B Toyota Kluger, FJ Cruiser, RAV4 Mould Clip

OEM: 75495-35010, 75396-35020 (Toyota)

T: 17 H: 8 x 8 L: 11



All clips are in **Packets of 25** unless stated otherwise.



CBM820A Toyota FJ Cruiser, RAV4, 4Runner Mould-Flare Clip



OEM: 75397-35010 (Toyota)
T: 17 H: 8 x 8 L: 16

POPULAR

CBM900W Kia / Hyundai Moulding Clip



OEM: 87756-2E000 (Hyundai & Kia)
T: 20 x 14 H: 9 x 10 L: 10

POPULAR

CBM915B Blue Kia & Hyundai Moulding/Flare Clip



Suits: Sportage 2011 On, Sorento, & Santa Fe 2013 On
OEM: 87756-1F000 (HYUNDAI)
T: 12 x 10 (20 x 14) H: 9 L: 10

CBM1115W Holden Captiva / Cruze Body Mould Clip White



OEM: 94530742 (GM)
T: 11 x 15 H: 8 L: 10

CBM1500G GM Cruze, Trax Body Flare Clip

ALSO SUITS: Jeep
OEM: 1157 1175 (GM)



T: 12 x 20 H: 9 L: 11

CBG038 Toyota Short Sill Panel & Door Trim Clip

SUITS: Corolla 2012 On
OEM: 75867-02010 (Toyota)



T: 18 H: 9.5 L: 10

CBG042 Toyota Long Sill Panel & Door Trim Clip

SUITS: Avalon, Camry, Corolla
OEM: 75867-33030 (Toyota)



T: 18 H: 9.5 L: 13

Guard / Door Trim / Panel Grommet Clips

CBG021 Toyota Prado Guard Liner Grommet

SUITS: Many Toyotas
OEM: 90189-06013 (Toyota)



T: 20 H: 8 x 8 L: 17

CBG023 Toyota Camry, RAV4, Avalon Long Guard Liner Clip

OEM: 90189-06157 (Toyota)



T: 20 H: 8 x 8 L: 22

POPULAR

CBG030 Toyota Hilux Guard Liner Grommet

SUITS: Also Camry & RAV4 95 On
OEM: 90189-06065 (Toyota)



T: 20 H: 9 x 9 L: 18

CBG1122 Ford Panel Screw Grommet BA on

SUITS: Ford Falcon & Ford Focus



T: 22 H: 11 L: 19

POPULAR

CBG1020W Mazda Door Panel Screw Grommet



OEM: GJ6A58975

T: 20 H: 10 L: 14

CBG015W Door Trim Panel Grommet



T: 16 H: 7.5 L: 12

CBG018W Door Trim Panel Clip



T: 13 H: 8 L: 12

CBG054W Door Trim Clip



T: 18 H: 8 L: 15

CBA208 Door Handle / Winder Spring Clip



T: 20 L: 18

All Aluminium Rivets

NEW

CBR420AS Silver All Alum 5/32" Sml Flange Trifold Folding Rivet



T: 8 H: 4 (5/32") L: 20

NEW

CBR523AS Silver All Alum 3/16" Med Flange Trifold Folding Rivet



T: 12 H: 4.8 (3/16") L: 22

NEW

CBR524AS Silver All Alum 3/16" Lrg Flange Trifold Folding Rivet



T: 16 H: 4.8 (3/16") L: 24

NEW

CBR421AB Black All Alum 5/32" Sml Flange Trifold Folding Rivet



Suits: Nissan Mitsubishi Mazda

T: 8 H: 4 (5/32") L: 20

NEW

CBR522AB Black All Alum 3/16" Med Flange Trifold Folding Rivet



Suits: Mazda Ford

T: 12 H: 4.8 (3/16") L: 22

NEW

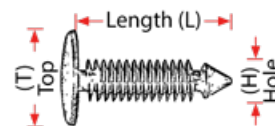
CBR525AB Black All Alum 3/16" Lrg Flange Trifold Folding Rivet



Suits: Mazda

T: 16 H: 4.8 (3/16") L: 24

All clips are in **Packets of 25** unless stated otherwise.



Rivets

CBR100 Toyota Aluminium LandCruiser 100 Series Side Mould Rivet

OEM: 90269-04053 (Toyota)

CBR100K10 Toyota Aluminium LandCruiser 100 Series Side Mould Rivet - **Pkt 10**

CBR101RA J701 Rivet Gun Adaptor for LandCruiser 100 Series Rivets



POPULAR

NEW

POPULAR

J701 Professional Grade Rivet Gun



✳ 3/32" ✳ 1/8" ✳ 5/23" ✳ 3/16"

CBR150 Toyota Large Flange Pop Rivet with Plastic Cap

SUITS: Toyota fuel tank & tube, rear bumper and bumper stay » Camry side moulding rivet

T: 13 H: 5.8 L: 14

CBR200K10 Toyota 200 Series/Prado/Lexus/Kluger Side Mould Rivet - **Pkt 10**



Use with #CW200K10, #CW250K10 and #CW350K10 clips.
OEM: 75547-51021

CBR50508 Toyota Side Mould & Door Panel/Glass Rivet



SUITS: Camry & Lexus

T: 6 (1/4") H: 4 (5/32") L: 7

CBR613 Window Regulator 1/4" Peel Type Rivet



SUITS: Window door regulator rivets

T: 12.7 (1/2") H: 6.4 (1/4") L: 17

CBR306 Alum. 1/8" Pop Rivet



T: 6.3 (1/4") H: 3.2 (1/8") L: 9.5

CBR40826 Aluminium 5/32" Pop Rivet for Tonneau Cover Clips



SUITS: Holden & Ford

T: 8 H: 4 (5/32") L: 26

CBR509 Alum. 3/16" Pop Rivet



T: 9.5 (3/8") H: 4.8 (3/16") L: 9.5

POPULAR

CBR516 Alum. Large Flange 3/16" Pop Rivet



SUITS: Camry windscreen side moulds » Ford bumper
T: 16 (5/8") H: 4.8 (3/16") L: 13

Plastic Rivets

CPR1355 Black Nylon Rivet for BMW X-Series



OEM: 07-14-7-293-278

T: 20 H: 6 L: 21

CPR1356W White Nylon Rivet for BMW X-Series



OEM: 07-14-7-391-323

T: 20 H: 6 L: 21

CPR1389W White Nylon Rivet for BMW X-Series



OEM: 07-14-7-391-324

T: 20 H: 6 L: 21

CPR61330 1/4" Nylon Rivet



SUITS: GM » Ford » Chrysler

T: 13 H: 6 (1/4") L: 30

CPR61728 1/4" Nylon Rivet



SUITS: BMW » Chrysler » Jeep » Subaru
OEM: 6500911 (Chrysler)

T: 17 H: 6 (1/4") L: 28

CPR61821 VW 1/4" Nylon Rivet



SUITS: VW
OEM: 175-853-577A

T: 18 H: 6.75 (17/64") L: 21

CPR62021 BMW 1/4" Nylon Rivet



SUITS: BMW
OEM: 51-71-7-002-953-2

T: 20 H: 5.6 (7/32") L: 21

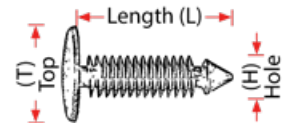
DFCT888 Slimline Plastic Riveter Kit - Swivel Head

✳ Swivel Head
perfect for use under wheel arch to avoid removing wheel



NEW

All clips are in **Packets of 25** unless stated otherwise.



Nuts / Bolts / Screws

CNTM6A M6 / 10mm Self Locking Nut



T: 10 H: M6

CNTM8A M8 / 12mm Self Locking Nut



T: 12 H: M8

CHM0618B M6 / 10mm Hex Bolt with Washer



L: 18

POPULAR

CHM0625B Long M6 / 10mm Hex Bolt with Washer



L: 25

CHM0825B M8 / 12mm Hex Bolt with Flat And Spring Washer



L: 25

CHS1219B 8mm Hex Self Tap Bolt with Washer



L: 19

CHS1420B 10mm Hex Self Tap Bolt with Washer



L: 20

POPULAR

CSP0820B Pan Head Phillips Screw



T: 8 H: 8 gauge L: 20

CSP1032B Pan Head Phillips Screw



T: 9 H: 10 gauge L: 32

CSP1216B Pan Head Stubby Phillips Screw - Black



T: 11 H: 12 gauge L: 16

POPULAR

CSP1416Z Pan Head Stubby Phillips Screw - Zinc



T: 12.5 H: 14 gauge L: 16

CSW0820B Wafer Head Phillips Screw - Black



T: 11 H: 8 gauge L: 20

CSW1020B Wafer Head Phillips Screw - Black



SUITS: Commodore door trim & interior trims
T: 11 H: 10 gauge L: 20

CNSM5F M5 Steel Nutsert Fastener with Flange



CNSM6F M6 Steel Nutsert Fastener with Flange



CNSM8F M8 Steel Nutsert Fastener with Flange



CNSALM5 M5 Aluminium Nutsert with Flange



CNSALM6 M6 Aluminium Nutsert with Flange



CNSALM8 M8 Aluminium Nutsert with Flange



CTS1606 Cable Tie Strap - 160mm



✳ Fits in 6mm round hole

CTS1809 Cable Tie Strap - 180mm



SUITS: Toyota & Others

Clips Storage

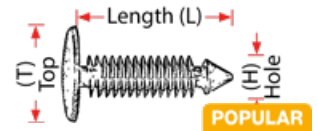
CB1802 Storage Box with 18 Removable Compartments



All clips are in **Packets of 25** unless stated otherwise.



If the clip you are after is not listed please let us know and we can try to source it for you.



AG1802KV2 Auto Glass Clip / Fastener Kit - 176 Pc



✦ New improved selection of clips. ✦ Comes with a selection of our most popular Auto Glass fasteners ✦ Includes storage box with 18 removable compartments with wall mounting holes and can be separated at hinge into two sections ✦ Refills are available for all clips & screws ✦ Most clips are OEM equivalent. ✦ All Fasteners are of Trade Quality

Windscreen A-Pillar Clip Kit

CBT070K10 Range Rover/Discovery Side Pillar Clip 02-On - Pkt 10

OEM:
DYC500020
(RANGE ROVER)
7M0-867-299-K
(VW)



T: 13 H: 10 L: 15

POPULAR

CBT085K10 Range Rover A-Pillar Trim / Windscreen Mould Clip - Pkt 10

OEM:
IPN 5000 50



T: 13 L: 12.5

POPULAR

CBT120K10 Land Rover Discovery / Range Rover Sport A-Pillar Clip - Pkt 10

OEM: LR034389
T: 14 L: 10



POPULAR

CBT205 Range Rover Evoque A-Pillar Side Mould Trim Clip

OEM:
LR033144



T: 12.5 H: 8 L: 12

CBT205K6 Range Rover Evoque A-Pillar Side Mould Trim Clip - Pkt 6



CBT097K10 Range Rover Evoque A-Pillar Grommet - Pkt 10

Use With
#CBT205 &
#CBT205K6



OEM:
LR002229

T: 12.5 H: 9 L: 15

POPULAR

CW280K8 Ford Transit 2000-On A-Pillar Side Mould - Mixed Pkt 8

OEM:
4069707,
4069906



Windscreen Clips

235103 Assorted Honda Accord Clips - Mixed Pkt 25



CBT071 Mitsubishi Triton Top Drip Rail Moulding Clip



SUITS: Triton ML/MN 2006-2015

POPULAR

CBT350K5 Land Rover Discovery 4 Clip Kit - Pkt 5



CBT380K20 Range Rover Evoque A-Pillar Clips 2011 - Pkt 20



CBT385K22 KIA Carnival WS A-Pillar Clip Kit - Pkt 22



T: 15x13 H: 9.5 L: 11

CW4 Metal Holden HQ-HZ



CW9K10 Ford Falcon XD/XE/ XF - Pkt 10



CW10 Metal Ford Falcon XA-XC, XW/Y



CW11 Mazda 626/Telstar 79-82



CW13 Windscreen Moulding Rivet Pin

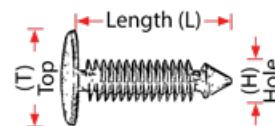


T: 5 H: 3 L: 7

CW14 Laser/Mazda 929 88-91



All clips are in **Packets of 25** unless stated otherwise.



Windscreen Clips cont...

CW15 Ford Laser/
Courier+Mazda 323/B-Series



CW17 Mitsubishi Magna
TM-TP



SUITS: Also Cordia & Starion

CW17A Mitsubishi Magna
TR-TS Top Mould Clip



CW18 Datsun 180B/200B
77-80



CW23A Metal Celica 78-82 /
Valiant VF/G Coupe (Rear)



CW34K10 BMW 5 Series E60 /
X5 F85 Clip - **Pkt 10**



OEM: 51 317064098

CW128K10 Jackaroo/Rodeo
92-03 - **Pkt 10**



CW145 Valiant CL-CM with
Screw



OEM: 6002615

CW150K8 Mitsubishi Magna
TE-On 96-05 Side Clip - **Pkt 8**



OEM: MR154127

CW152K6 Mitsubishi Magna
TE-TH 96-05 Pink Top Clip -
Pkt 6



OEM: MR154126

CW177K8 Subaru Forester/
Impreza - **Pkt 8**



OEM: 91017FA010

POPULAR

CW200 Toyota LandCruiser
200 Series 11/07 On



OEM: 75548-60021

CW200K10 Toyota
LandCruiser 200 Series 11/07
On - **Pkt 10**



POPULAR

CW221K10 Iveco Daily
2014-On A Pillar Clips -
Pkt 10



OEM: 5801720444

T: 11 x 14

CW222K10 Iveco Daily
2014-On Cowl Clips - **Pkt 10**



OEM: 500326189

T: 18

POPULAR

CW250 Toyota LandCruiser
Prado 150 Ser's 11/09 &
Lexus IS250



OEM: 75545-53010

CW250K10 Toyota
LandCruiser Prado 150 Ser's
11/09 & Lexus IS250 - **Pkt 10**



CW275K8 Land Rover / Range
Rover 95-02 - **Pkt 8**



OEM: DCC 10012L

CW340K8 Honda Euro Side
Pillar Clips - **Pkt 8**



NEW

CW350K10 Toyota Kluger
(14-) Windscreen Clip -
Pkt 10



NEW

CW375K10 Peugeot 308 (07-)
Windscreen Clip - **Pkt 10**



OEM: 812389